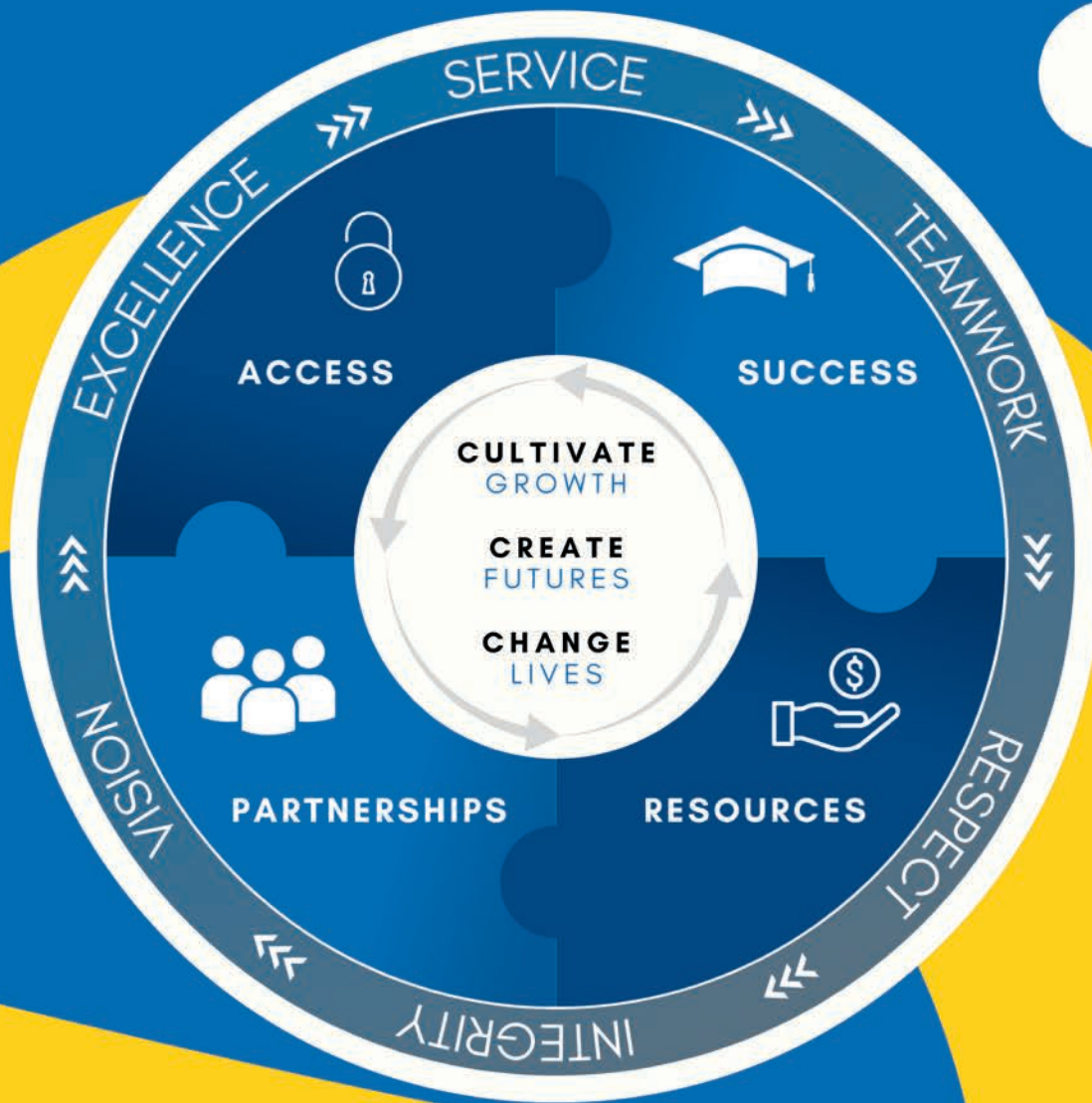


2023-2026 STRATEGIC PLAN



WELCOME MESSAGE



Dr. Janet Wansick
President

At Eastern Oklahoma State College, our goal is to be an exceptional institution dedicated to student access, success and transformational opportunities. We envision a community where individuals have the power to cultivate personal and academic growth, create promising futures, and positively impact lives within their community and beyond. With our mission, vision and core values serving as a guiding framework, we have created a three-year strategic plan focused on four key pillars: access, success, resources, and partnerships. Together, let us embrace the opportunities that lie ahead and work collaboratively to build a brighter future for our students, our institution, and the communities we proudly serve.

Janet Wansick



OUR VISION

Eastern Oklahoma State College strives to be a transformative learning community, known for academic excellence, accessibility, innovation, and service, to shape a brighter future for students and the region.

OUR MISSION

Cultivate Growth. Create Futures. Change Lives.



OUR CORE VALUES

SERVICE

We strive to ensure service to others is deeply ingrained in our culture, empowering students to become compassionate leaders and active contributors to society.

TEAMWORK

We value teamwork, embracing collaboration across disciplines, departments, and communities to provide comprehensive support systems that promote student success.

RESPECT

We believe every individual is valued and treated with dignity. We nurture an environment that creates a sense of belonging, fostering an enriching educational experience for all.

INTEGRITY

We emphasize ethical conduct, honesty, and transparency. We strive to instill values that promote ethical decision-making, social responsibility, and personal accountability in our students and employees.

VISION

We embrace innovation and a proactive approach to address challenges and opportunities. We are committed to evolving and enhancing our programs and services to meet the needs of our students and the demands of a global workforce.

EXCELLENCE

We aspire for excellence in all that we do. Through a commitment to continuous improvement, we aim to exceed expectations in instruction, student support, and community engagement.

GOAL SUMMARY

By focusing on these four strategic areas, Eastern Oklahoma State College aims to provide an accessible path to a college degree, foster student success, optimize resource utilization, and establish strong partnerships to fulfill its mission.

ACCESS

Enhance opportunities for individuals from diverse backgrounds to pursue higher education at Eastern. Expand degree and certificate programs in critical workforce-ready areas, develop programs and initiatives to remove barriers to access, and increase scholarship funding to ensure equal access for all prospective students.

SUCCESS

Foster a supportive and engaging learning environment that promotes student success and completion. Enhance student retention and graduation rates by implementing evidence-based practices, offering comprehensive advising onto a guided pathway, providing support services, programs, and implementing strategies to address student needs and challenges.

RESOURCES

Optimize the allocation and utilization of resources to support the college's mission and strategic objectives. Secure additional funding through grants, partnerships, and fundraising efforts, as well as effectively manage existing resources to ensure efficient utilization. Enhance the institution's facilities, infrastructure, technology, and employee professional development opportunities to provide an optimal learning environment for everyone.

PARTNERSHIPS

Establish and strengthen collaborative relationships with external stakeholders, including businesses, industries, educational institutions, and community organizations. Create mutually beneficial partnerships that enhance educational opportunities, promote economic and workforce development initiatives, and provide students with meaningful learning and career pathways.

GOAL #1

ACCESS

KEY PERFORMANCE INDICATORS

- Credit Hour & Head Count
- Micro-Credentials & Workforce Ready Programs
- Scholarships & Funding for Students

GOAL #2

SUCCESS

KEY PERFORMANCE INDICATORS

- Persistence & Retention Rates
- Number of Graduates
- Course Completion in First Semester
- Post-Graduation Student Success

GOAL #3

RESOURCES

KEY PERFORMANCE INDICATORS

- Financial Stewardship
- Non-State Funding
- Professional Development
- Facilities Upgrades & Maintenance

GOAL #4

PARTNERSHIPS

KEY PERFORMANCE INDICATORS

- Opportunities & Relationships with Community Partners
- Alumni Involvement
- Curricular & Co-Curricular Involvement

